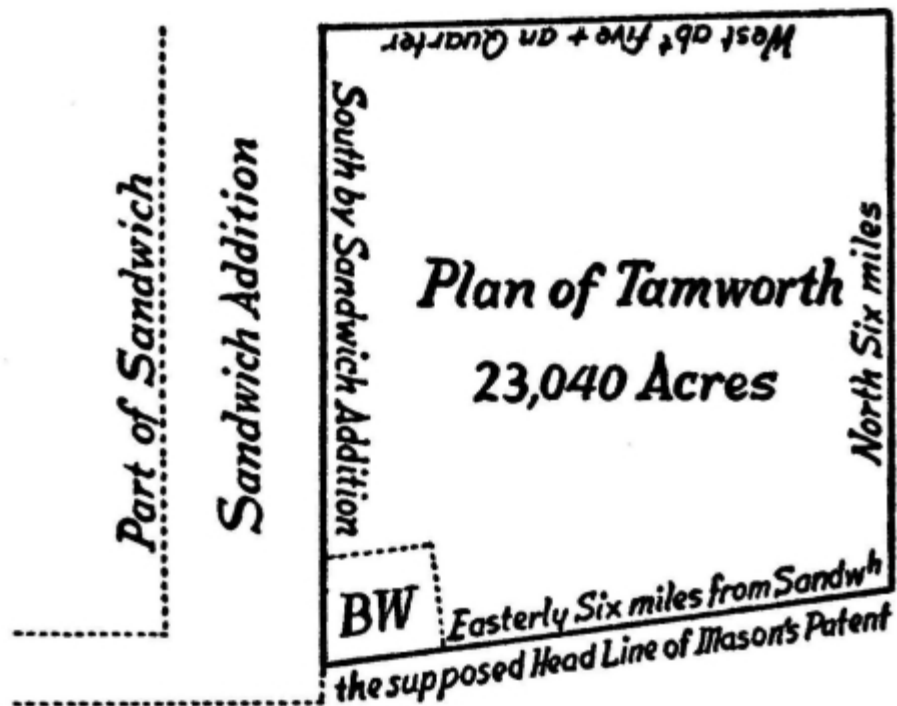


Chapter XV

Maps



"The map is not the territory"

~Alfred Korzybski

Chapter XV

Maps

15.1 DISCLAIMER

These maps are intended for use with the Tamworth Master Plan. The information presented is to be used for planning purposes and may not fully represent actual geographical conditions. Inaccuracies are known to exist in some data layers. Corrections, additions, or deletions should be reported to the Town of Tamworth Planning Board.

Most data presented represents stock data sets obtained from NH GRANIT, at Complex Systems Research Center, UNH. CSRC, under contract to the NH Office of Energy and Planning (OEP), and in consultation with cooperating agencies, maintains a continuing program to identify and correct errors in these data. OEP, CSRC, and the cooperating agencies make no claim as to the validity or reliability or to any implied uses of these data.

15.2 DATA SOURCES

Agricultural Uses

Agricultural uses were mapped by the Conservation Lands Review Committee, using aerial photographs, local knowledge, and a windshield survey.

Aquifer Data

Provided by Complex Systems Research Center, U.S. Geological Survey. NH Department of Environmental Service.

Elevation Data

Digitally derived using Digital Elevation Models automated by U.S. Geological Survey.

Gravel Resources

Gravel resources were derived from the soil surveys prepared by the National Resource Conservation Service, using classifications for Carroll County.

Habitat Land Cover

NH Fish & Game has worked together with partners in the conservation community to create the state's first Wildlife Action Plan, mandated and funded by the federal government. It contains locations of known and potential critical wildlife habitat in the state, based on requirements of associated wildlife species of concern.

Hydrological Data

U.S. Geological Survey, U.S. Environmental Protection Agency.

NAIP

National Agriculture Imagery Program 2003 orthorectified imagery. Horizontal accuracy +/- 3 meters.

National Wetlands Inventory

Automated by the U.S. Fish & Wildlife Service and post-processed by UNH Complex Systems to comply with GRANIT standards.

NH Land Cover Assessment 2001

Landsat Thematic Mapper images from 1990-1999.
Categorized into 23 class levels with 82.2% accuracy.

Parcel Data

Tamworth tax maps produced by Cartographics Associates, Inc.

Prime Wetlands

Digitized by NH Department of Environmental Services based on Barry Keith's 1979 *Inventory and Evaluation of the Wetlands of Tamworth*.

Scenic Views

Conservation Lands Review Committee

Soil Development Potential

Produced by applying ratings from *Soil Potential Ratings for Low Density Development in Carroll County* to the soil maps produced by National Resource Conservation Service.

Soils

Digital version of standard, county-based soil surveys prepared by the National Resource Conservation Service.

Trails

Mike Bromberg, WODC.
Chris Conrod, Tamworth Conservation Commission.
Claes Thelemarck, The Community School.
Scott Aspinall & David Little, Conservation Lands Review Committee.

Transportation Data

Provided by NH Department of Transportation.

Unfragmented Blocks

Provided by The Nature Conservancy, based on the presence of roads, or other man made barriers.

Watersheds

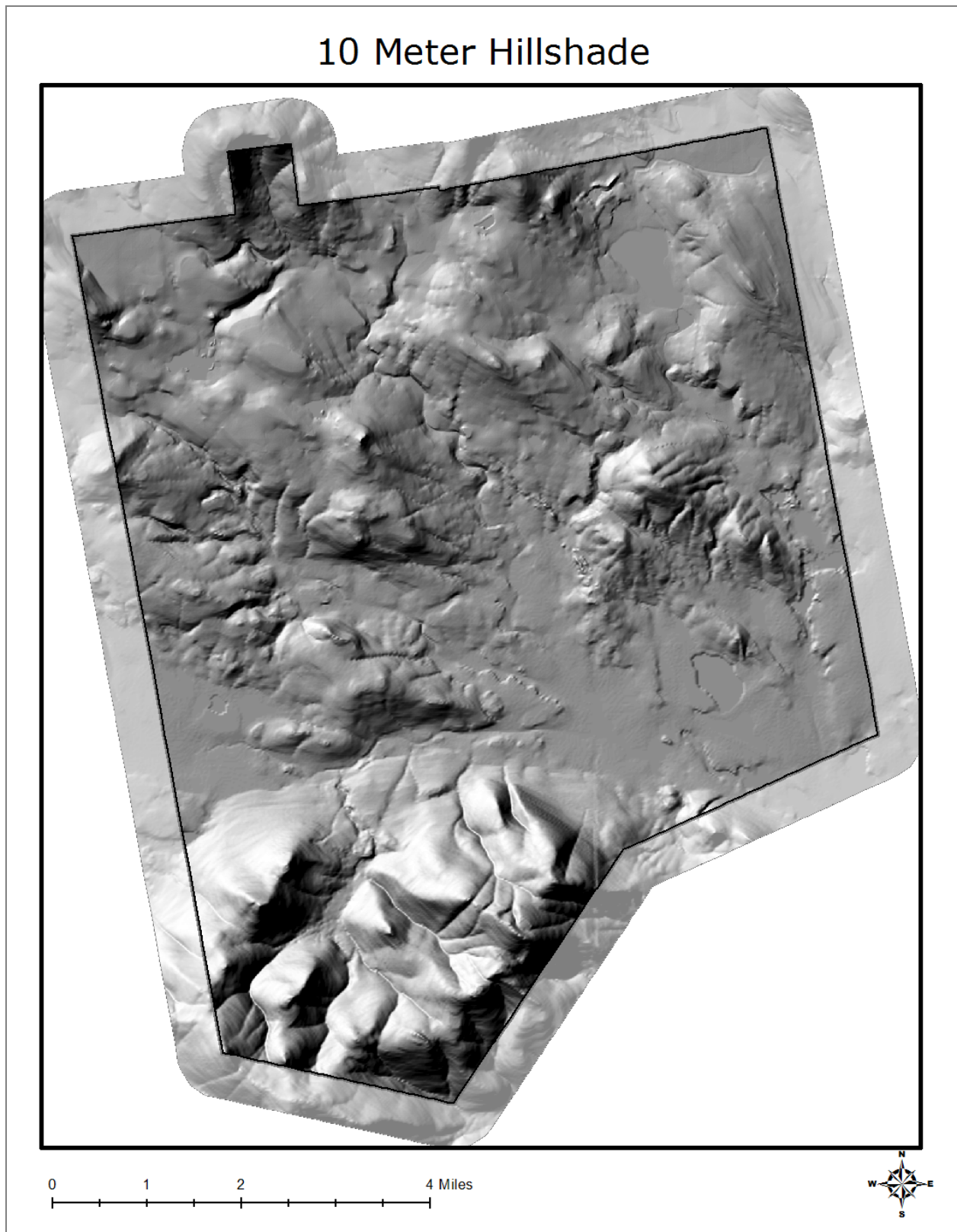
Provided by US Department of Agriculture, using hydrological unit boundaries at the subwatershed (12-digit) level.

PROJECTION

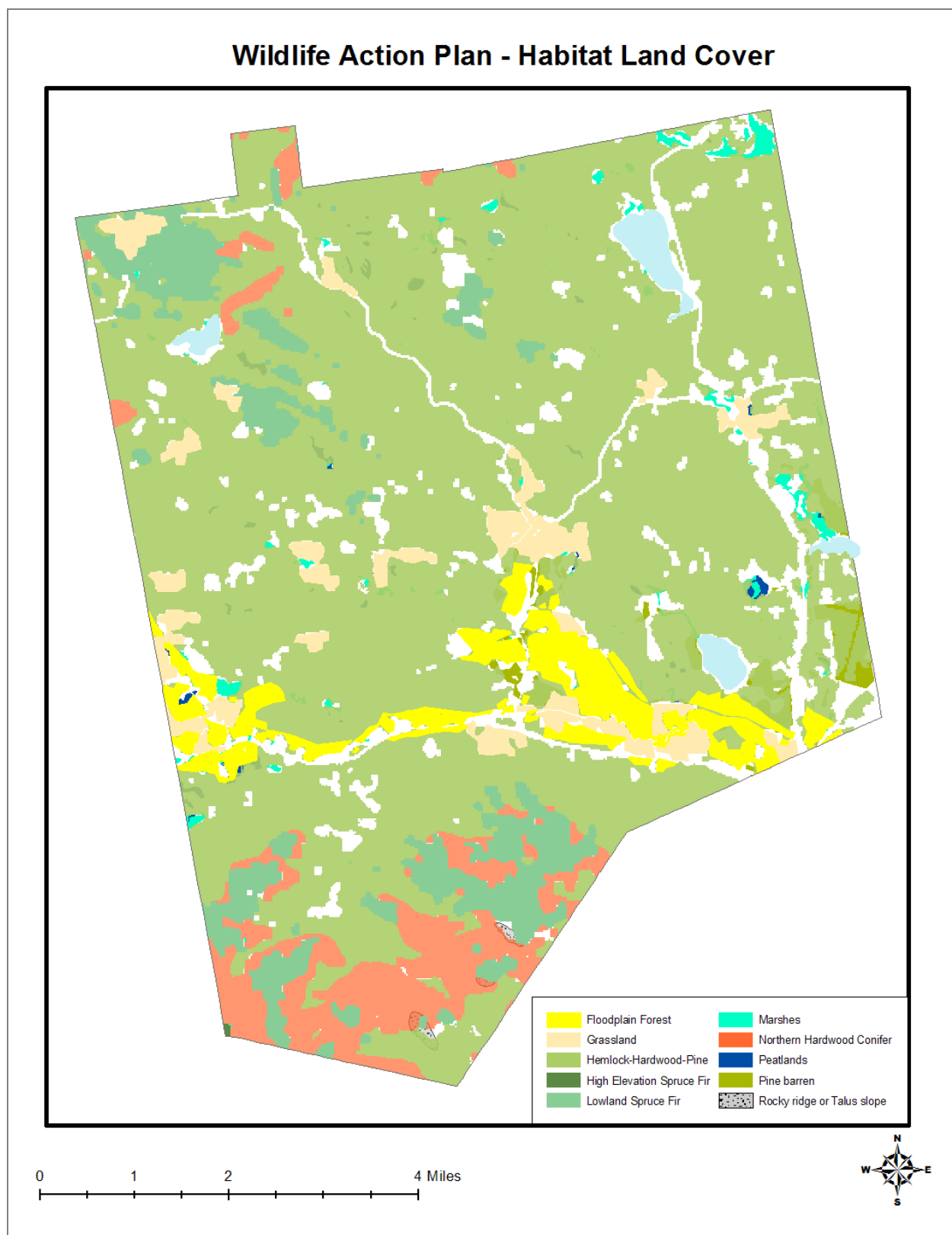
NH State Plane Feet, North American Datum, 1983.

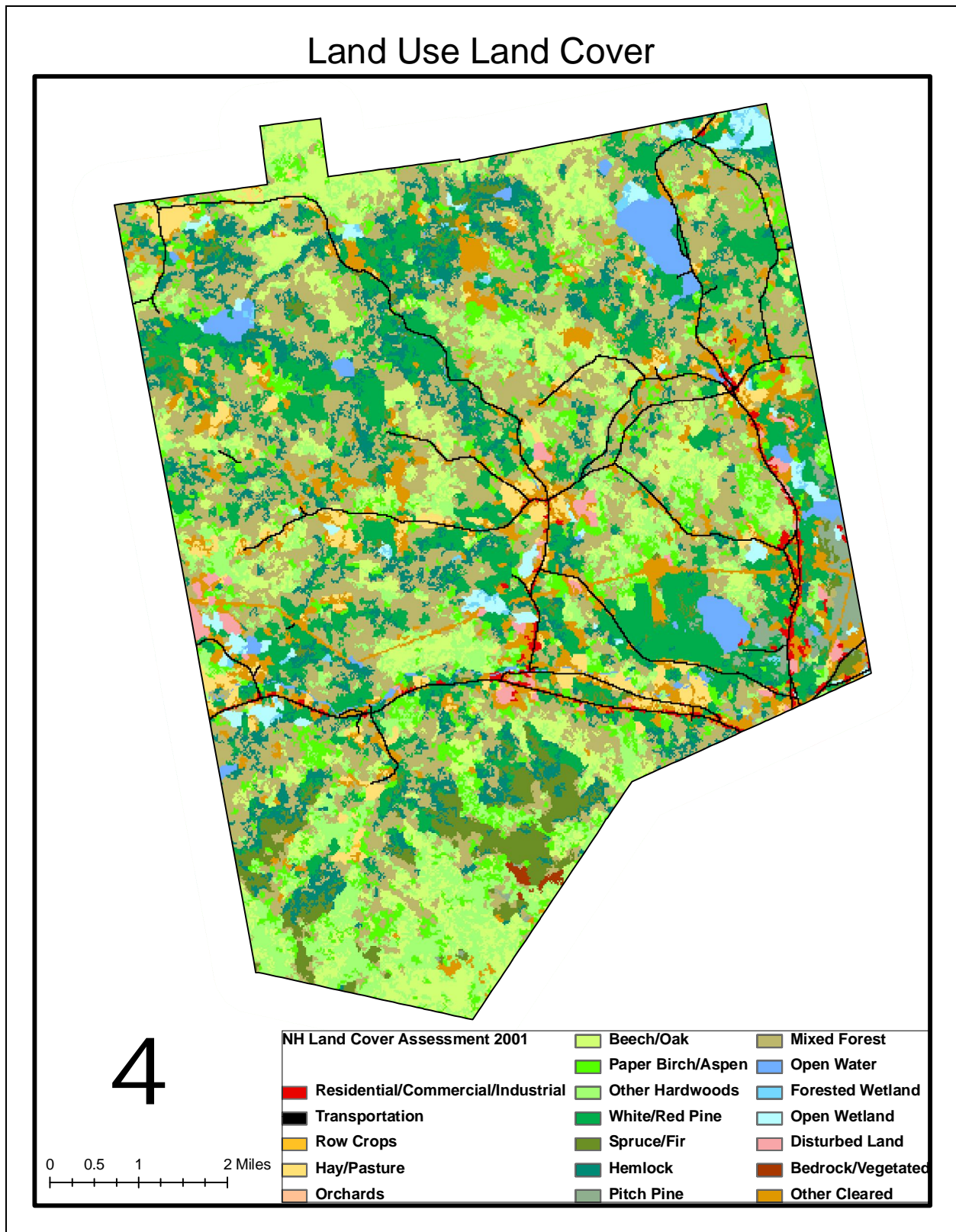


Map 15.1 NAIP

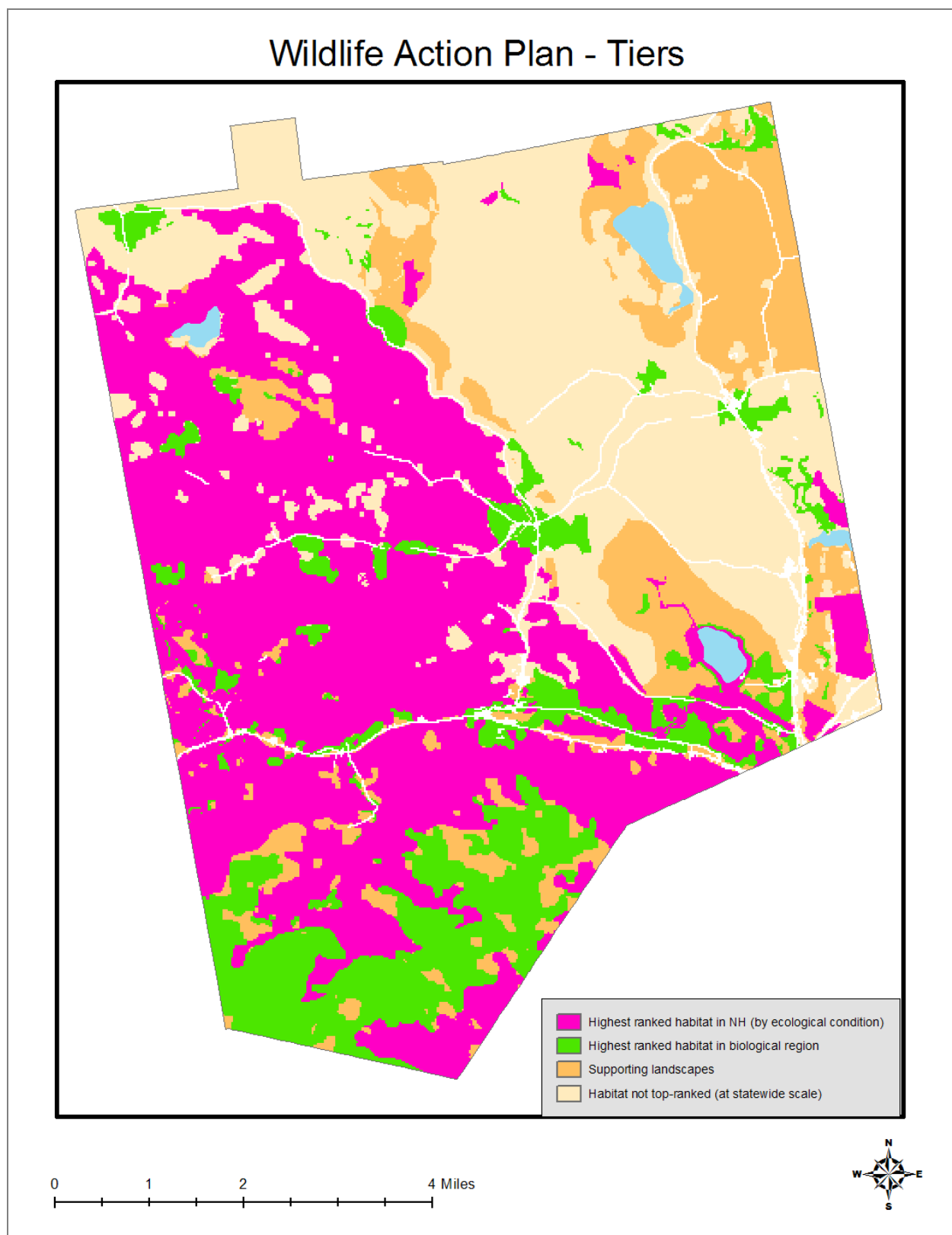


Map 15.2 Hillshade

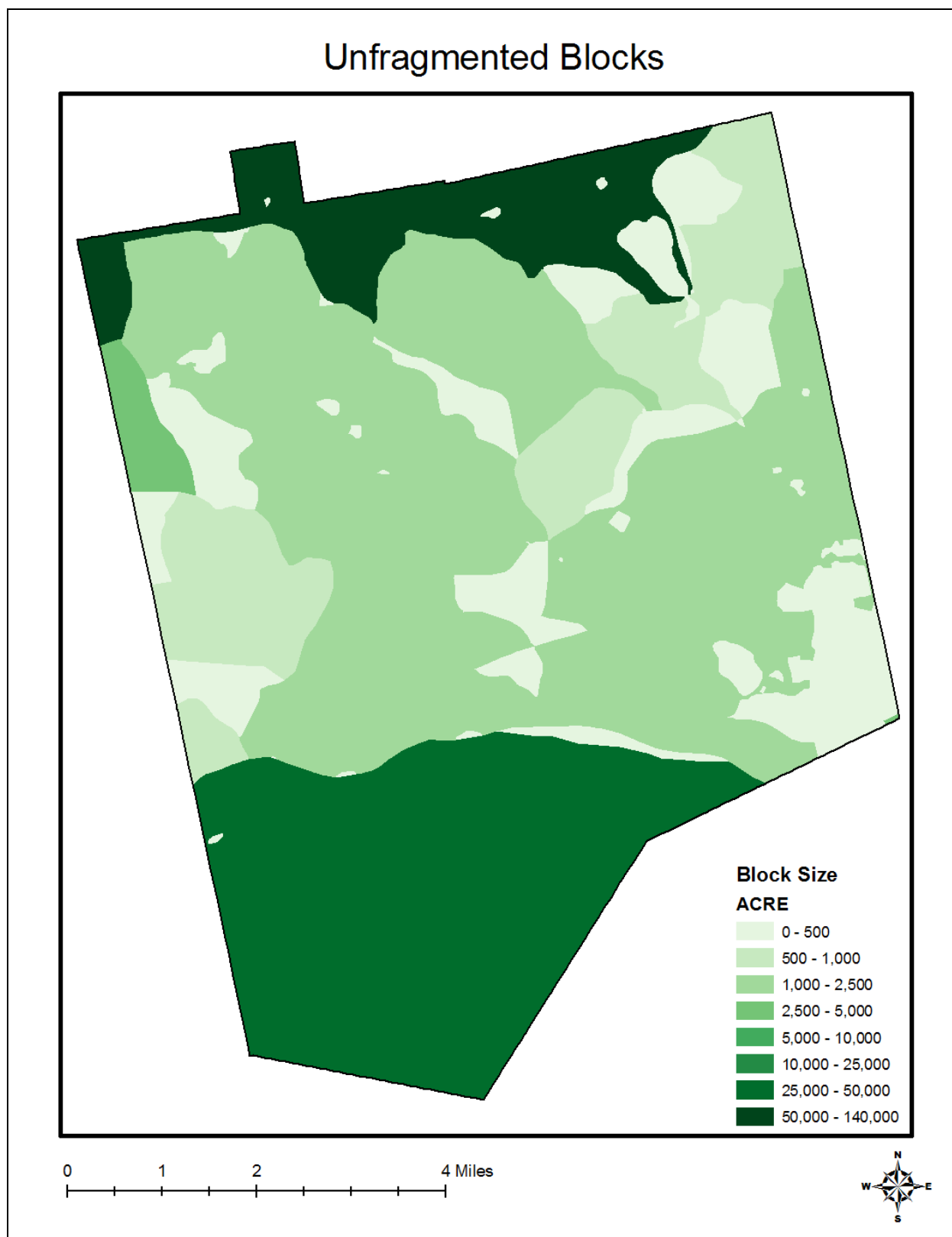
**Map 15.3 Habitat**

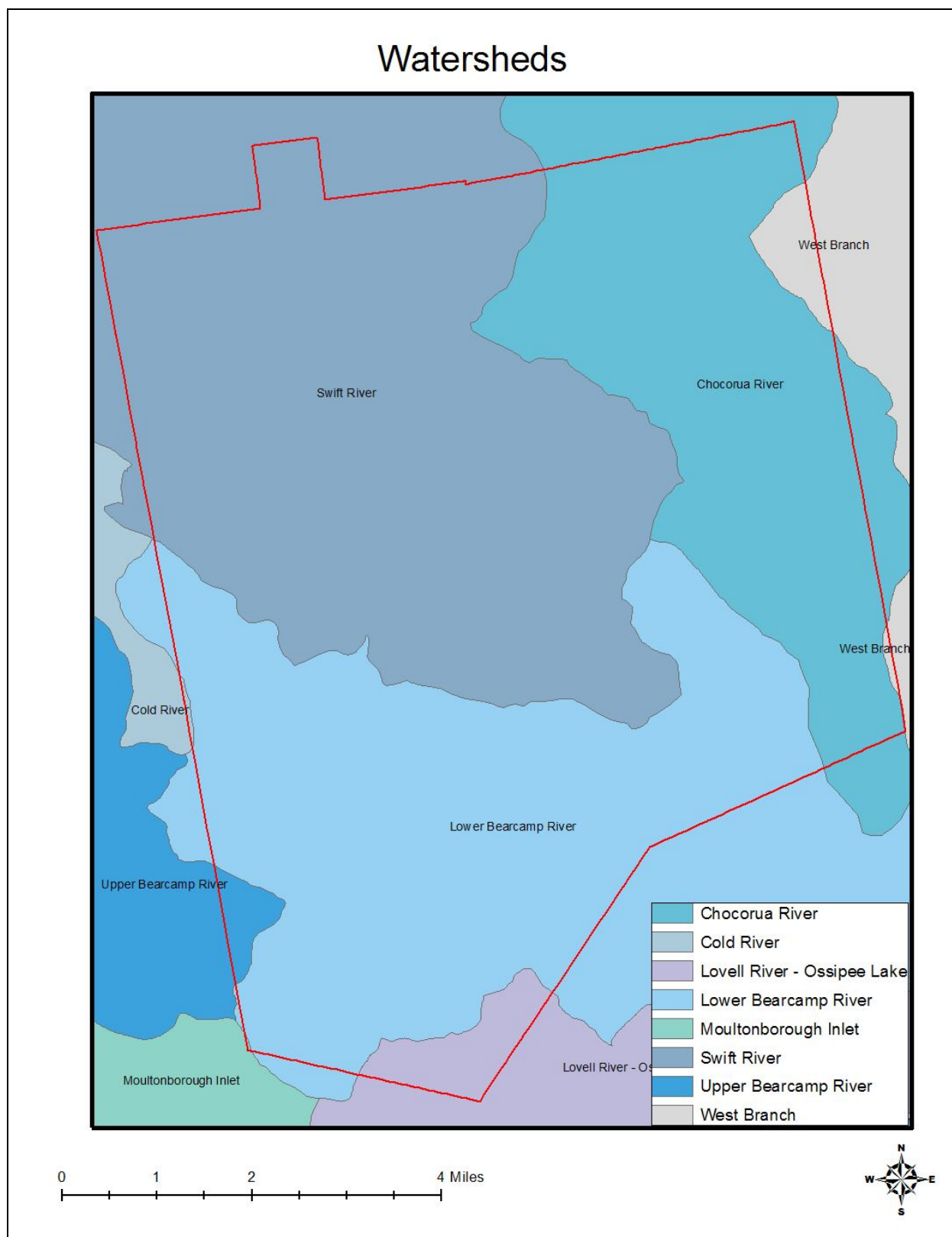


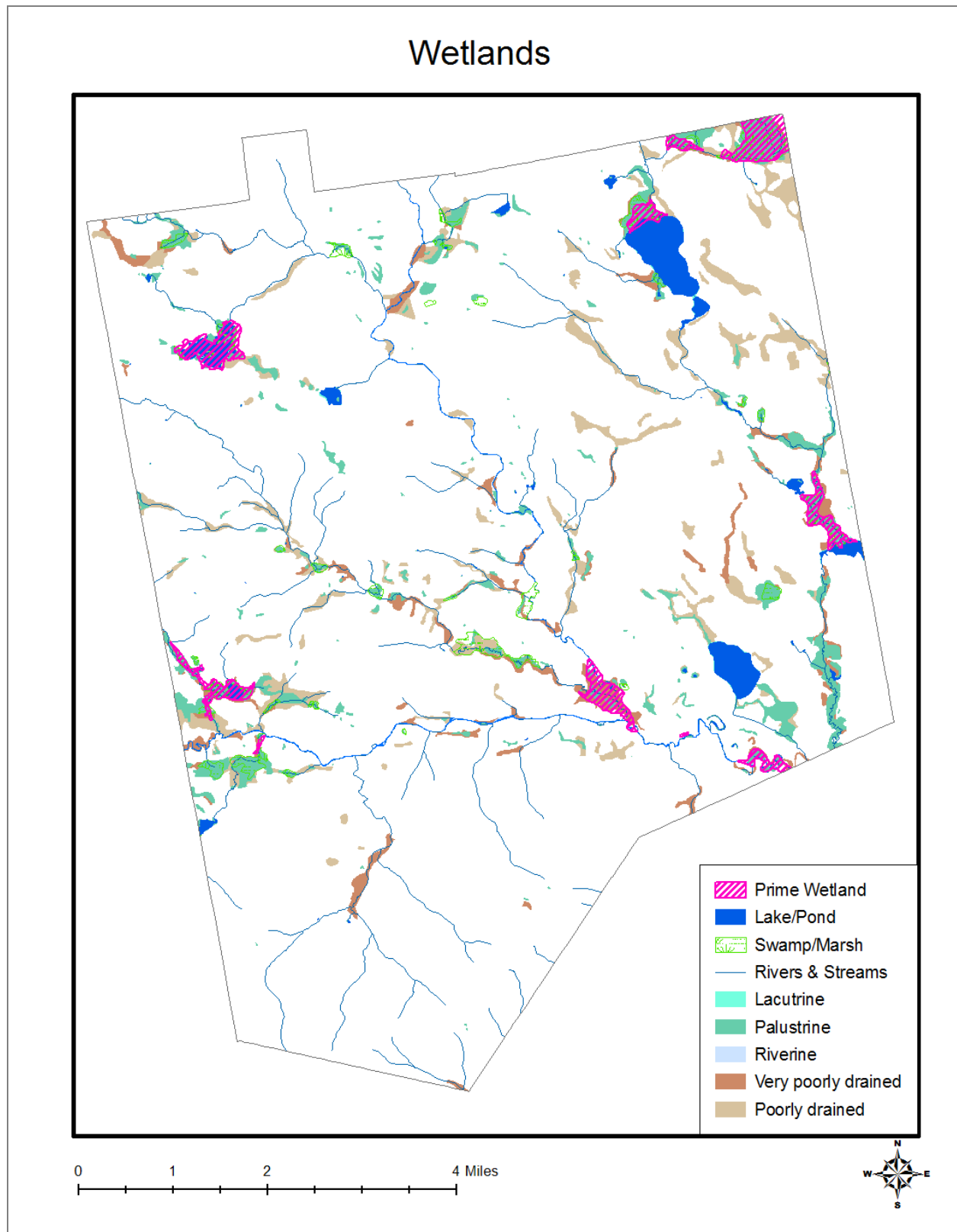
Map 15.4 Land Cover

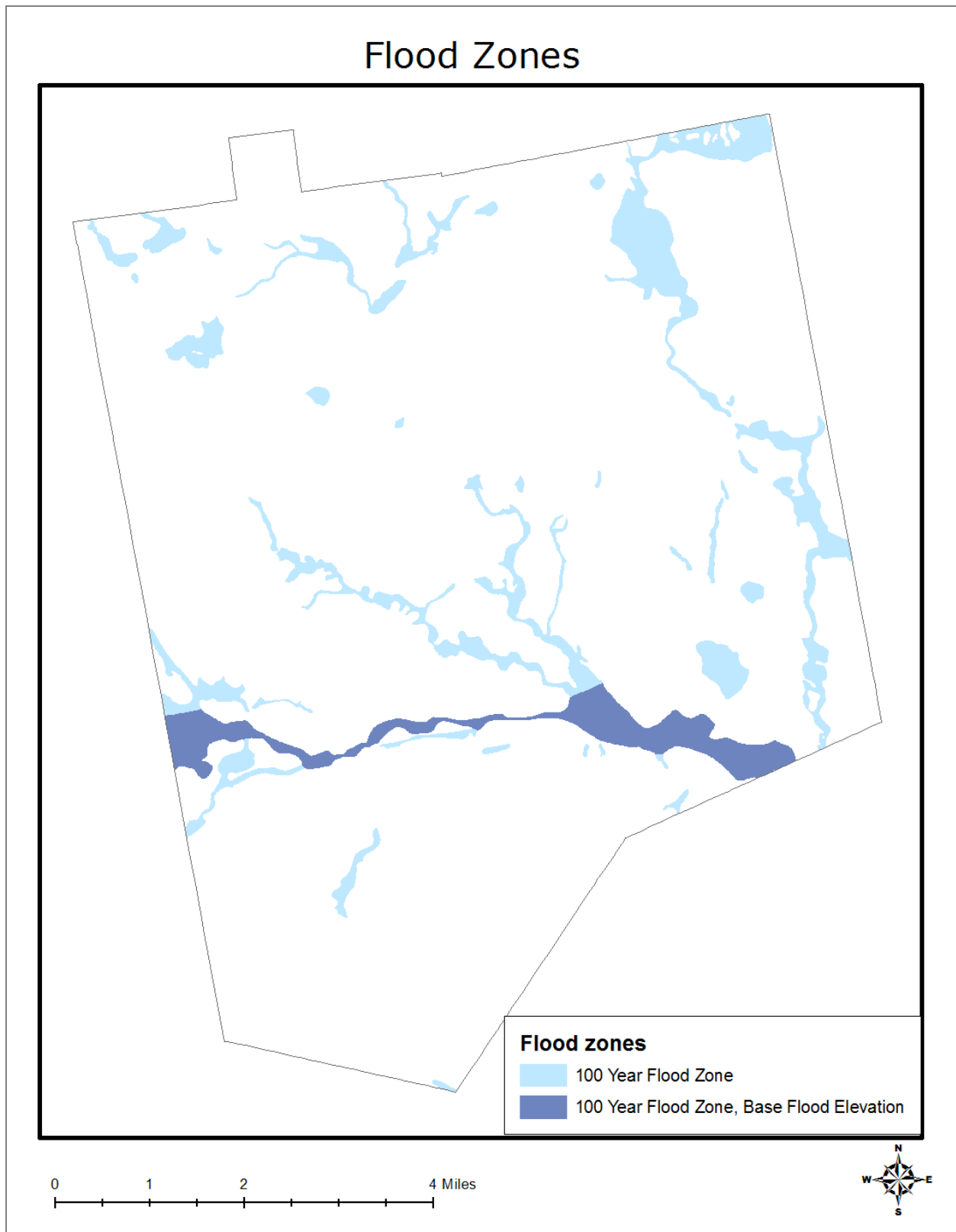


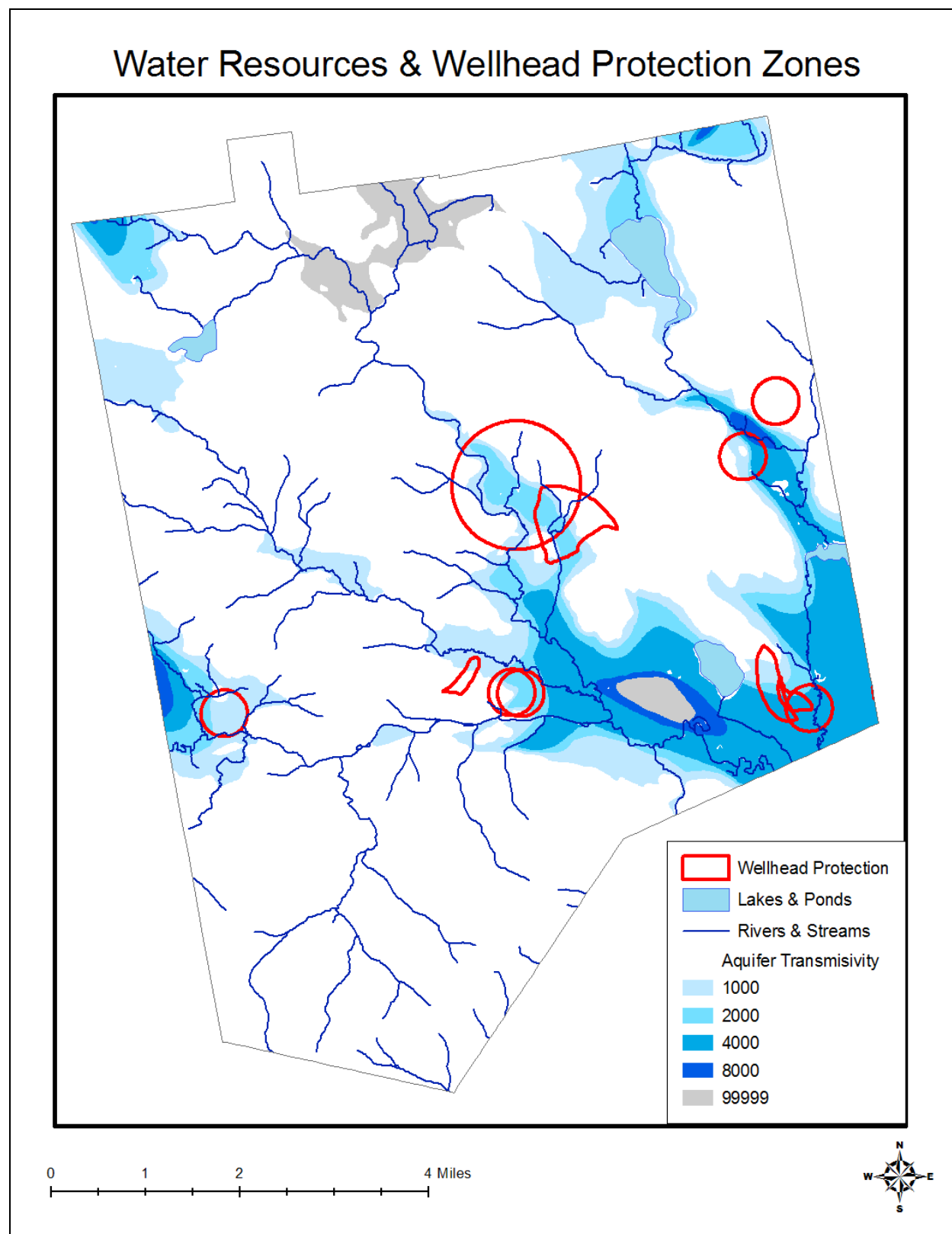
Map 15.5 Highest Ranked Wildlife Habitat by Ecological Condition (Statewide)

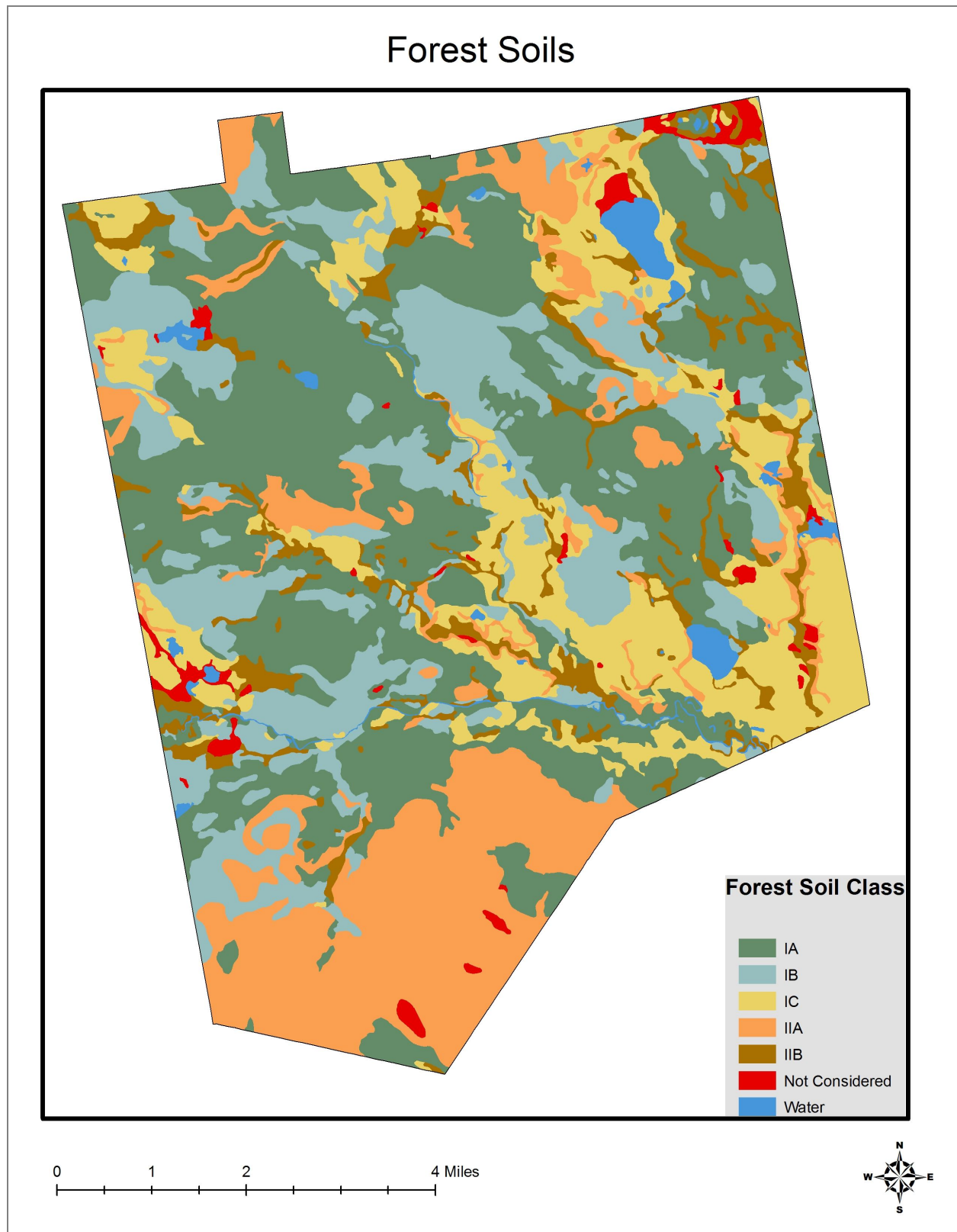
**Map 15.6 Unfragmented Blocks**

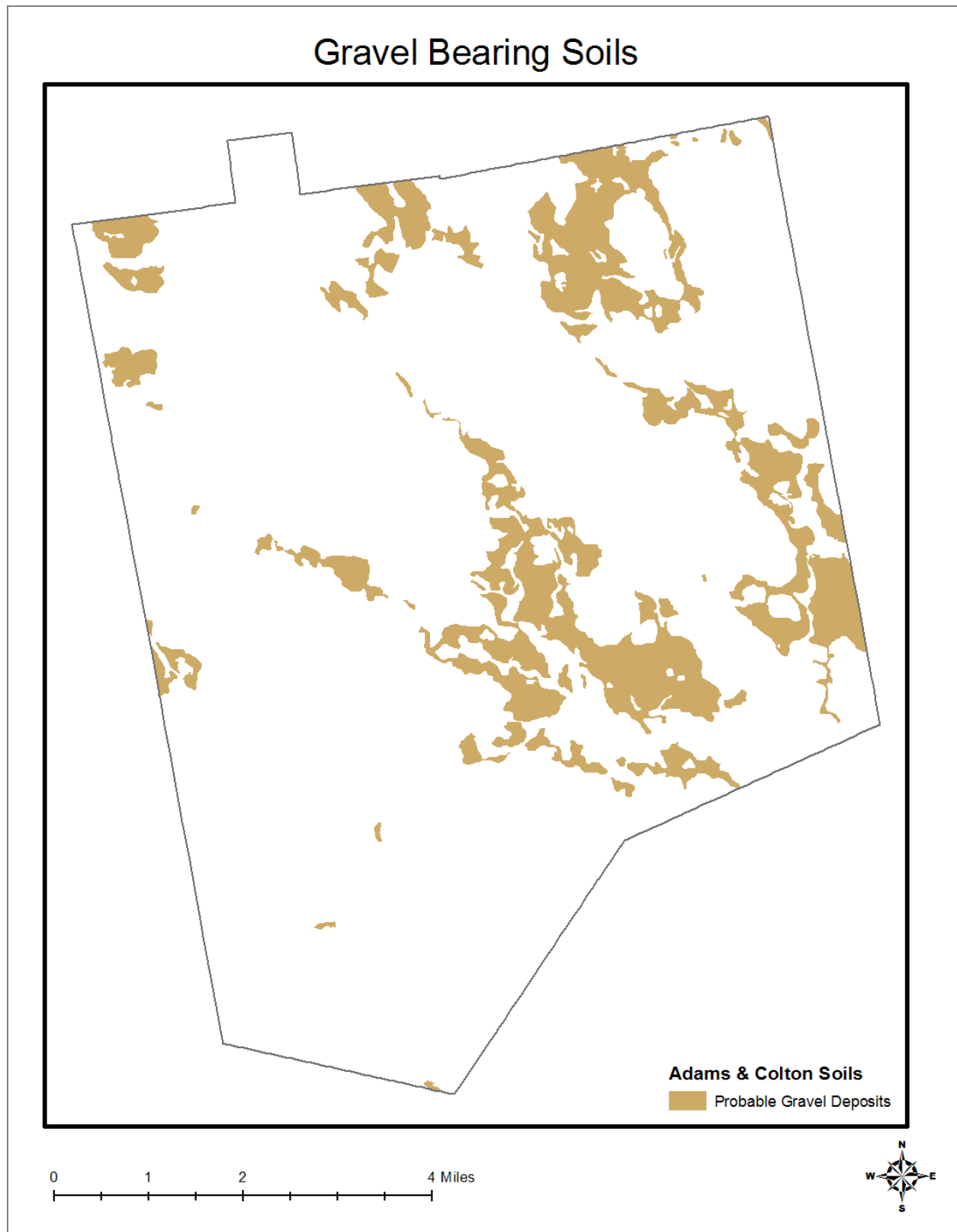
**Map 15.7 Watersheds**

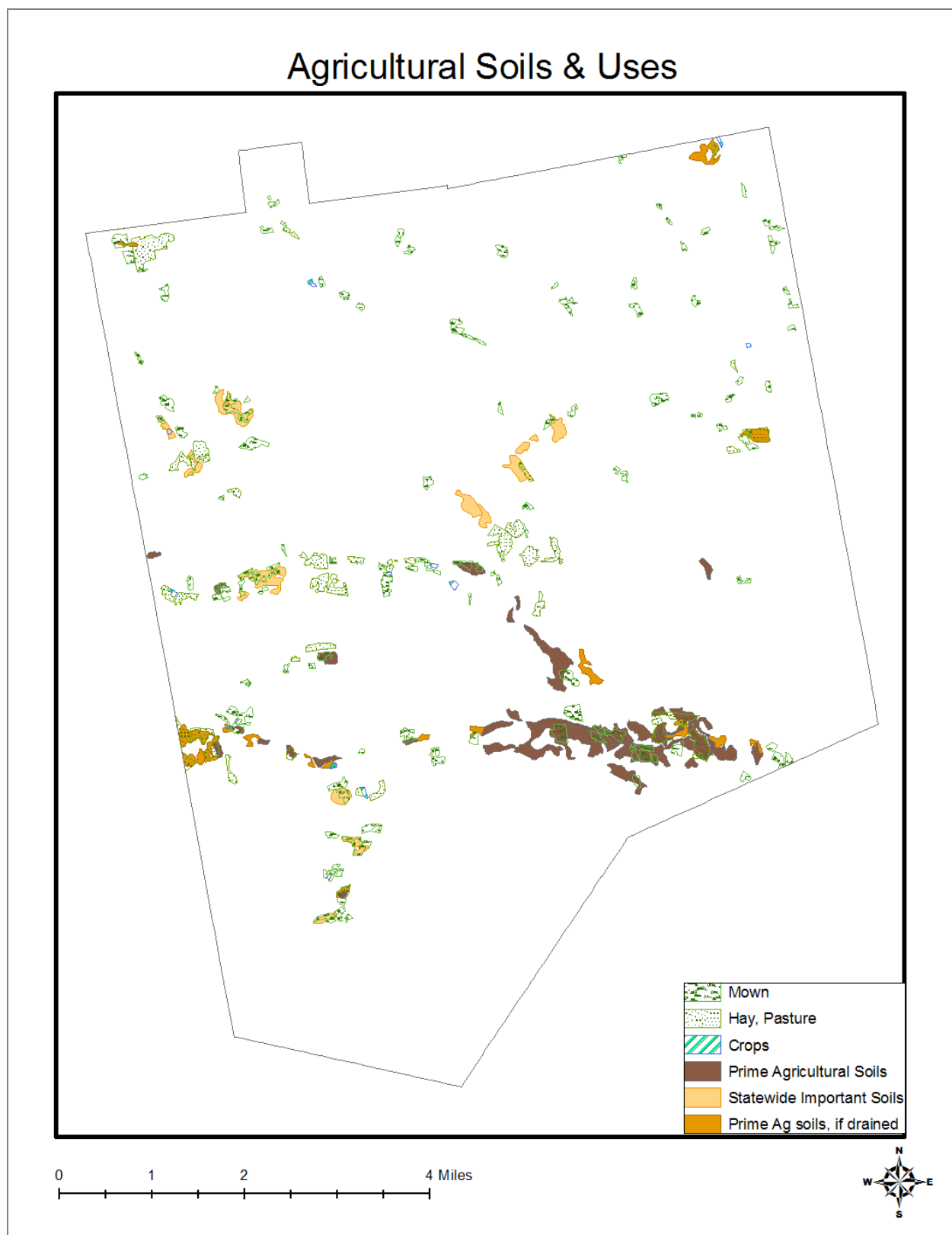
**Map 15.8 Wetlands & Surface Waters**

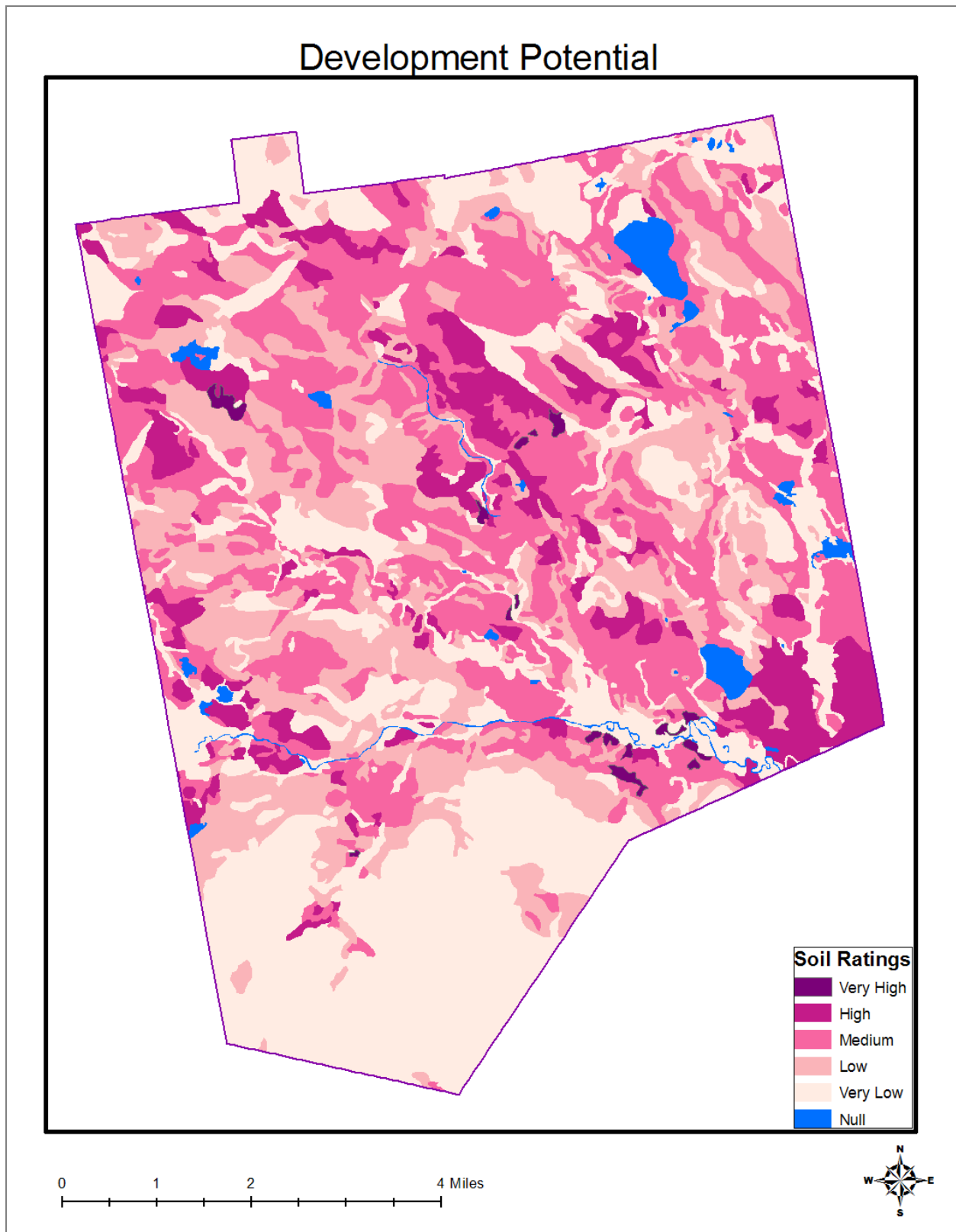
**Map 15.9 Flood Zones**

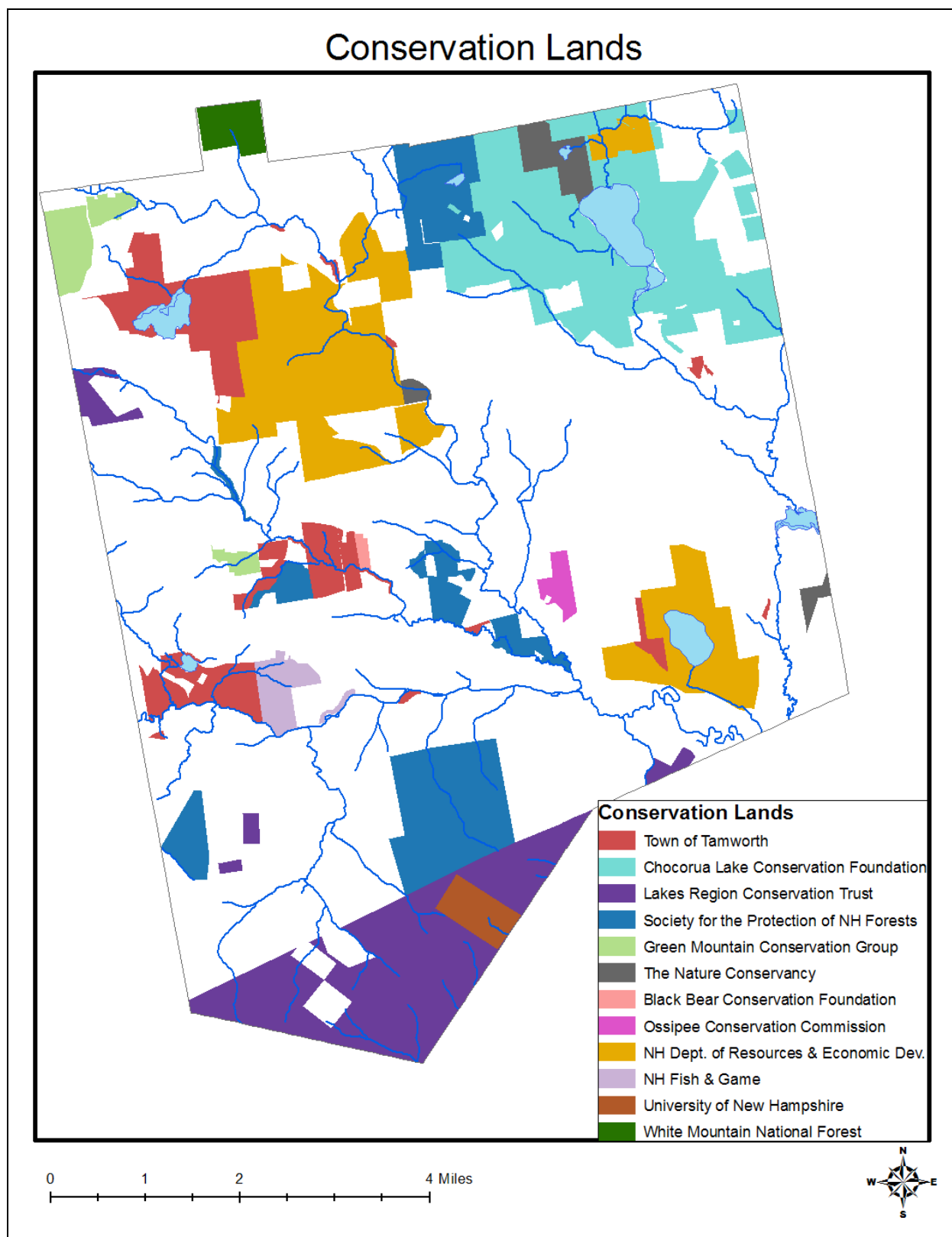
**Map 15.10 Water Resources & Wellhead Protection Zones**

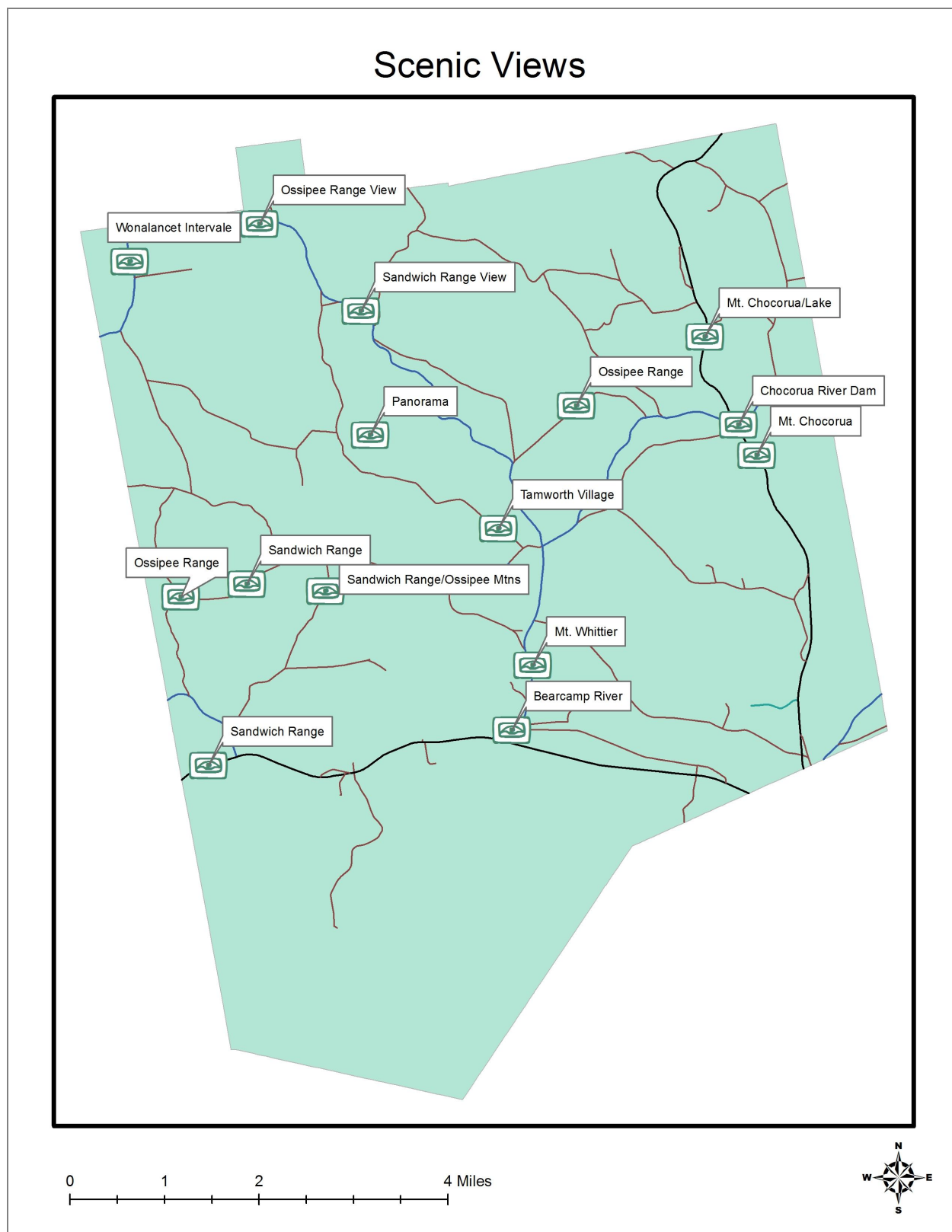
**Map 15.11 Forest Soils**

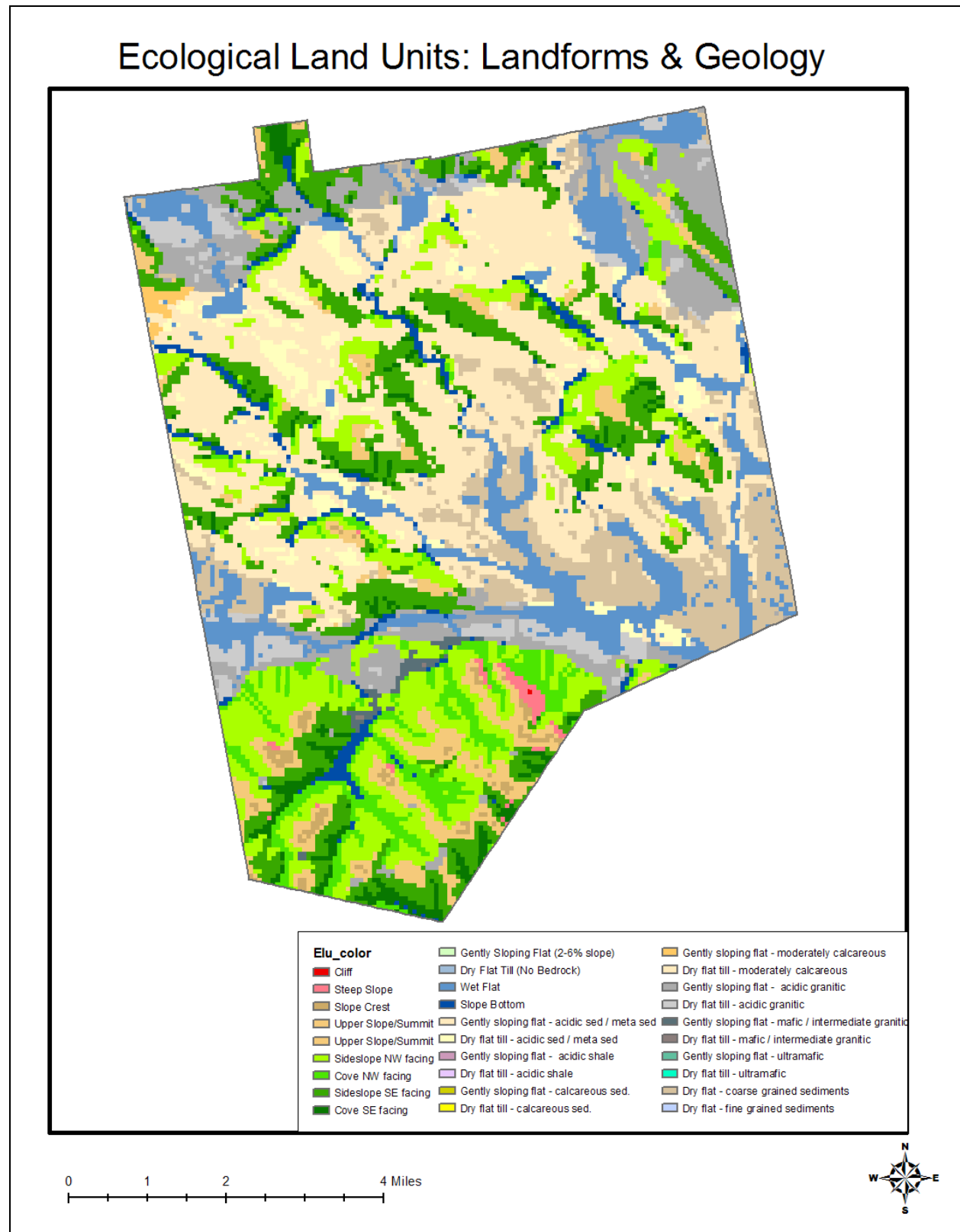
**Map 15.12 Gravel Resources**

**Map 15.13 Agricultural Soils & Uses**

**Map 15.14 Soil Development Potential**

**Map 15.15 Conservation Lands**

**Map 15.16 Scenic Views**



Map 15.17 Landforms & Geology